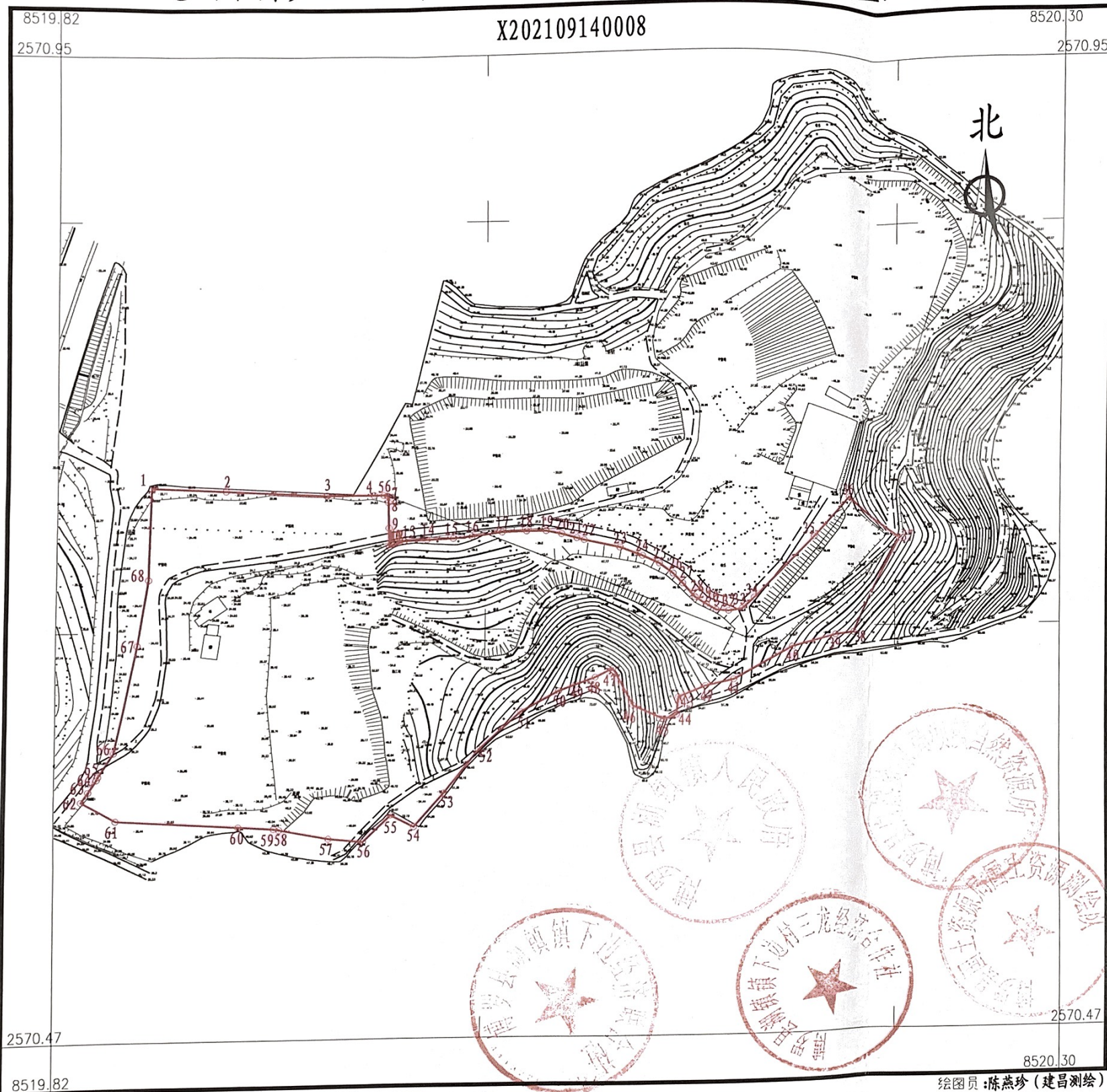


惠州市博罗县2021年度第四十二批次城镇建设用地位置红线图

X202109140008



博罗县国土资源局国土资源测绘队

8519.82
2570.47

8520.30
2570.47

界址点坐标表

点号	X	Y	边长
1	2570736.474	38519864.370	34.32
2	2570734.832	38519898.654	46.72
3	2570732.499	38519945.314	22.29
4	2570732.500	38519967.608	4.57
5	2570732.574	38519972.177	1.57
6	2570732.379	38519973.735	0.51
7	2570732.095	38519974.160	3.06
8	2570729.034	38519974.315	12.55
9	2570716.489	38519974.629	9.22
10	2570707.270	38519974.851	0.08
11	2570707.301	38519974.928	0.10
12	2570707.197	38519974.930	7.51
13	2570709.984	38519981.900	10.93
14	2570710.504	38519992.819	12.49
15	2570711.025	38520005.298	8.95
16	2570711.823	38520014.214	14.58
17	2570713.775	38520028.662	11.72
18	2570714.166	38520040.377	9.37
19	2570714.166	38520049.748	7.58
20	2570712.604	38520057.168	7.68
21	2570710.495	38520064.551	3.69
22	2570709.480	38520068.101	17.62
23	2570705.575	38520085.283	11.75
24	2570701.280	38520096.216	9.08
25	2570697.375	38520104.417	8.31
26	2570692.329	38520111.017	6.72
27	2570687.429	38520115.614	9.00
28	2570680.594	38520121.473	0.04
29	2570680.571	38520121.510	0.07
30	2570680.521	38520121.552	6.37
31	2570677.103	38520126.923	5.69
32	2570674.174	38520131.805	5.88
33	2570673.686	38520137.664	6.42
34	2570674.663	38520144.011	7.95
35	2570680.033	38520149.870	41.38
36	2570709.992	38520178.410	26.49
37	2570729.791	38520196.010	0.01
38	2570729.801	38520196.016	33.43
39	2570709.777	38520222.788	

界址点坐标表

点号	X	Y	边长
39	2570709.777	38520222.788	52.71
40	2570662.625	38520199.234	9.69
41	2570661.476	38520189.612	21.83
42	2570655.764	38520168.540	32.22
43	2570639.870	38520140.508	13.84
44	2570636.745	38520127.027	13.97
45	2570631.465	38520114.089	8.78
46	2570622.735	38520113.197	6.31
47	2570620.566	38520107.268	16.38
48	2570627.411	38520092.386	20.97
49	2570645.825	38520082.353	9.42
50	2570641.593	38520073.936	9.90
51	2570638.165	38520064.648	8.85
52	2570635.100	38520056.343	20.59
53	2570625.171	38520038.303	27.04
54	2570606.846	38520018.422	26.56
55	2570585.862	38520002.140	21.70
56	2570569.368	38519988.037	12.59
57	2570575.236	38519976.902	18.13
58	2570562.354	38519964.145	16.35
59	2570564.163	38519947.896	0.00
60	2570564.163	38519947.893	23.52
61	2570568.847	38519924.841	2.64
62	2570569.374	38519922.250	0.00
63	2570569.374	38519922.247	16.57
64	2570570.531	38519905.717	0.03
65	2570570.533	38519905.689	0.00
66	2570570.533	38519905.686	56.60
67	2570574.486	38519849.223	18.50
68	2570583.899	38519833.297	5.80
69	2570588.756	38519836.464	7.04
70	2570594.729	38519840.197	0.01
71	2570594.738	38519840.201	0.01
72	2570594.744	38519840.205	1.66
73	2570596.262	38519840.869	13.39
74	2570607.648	38519847.915	53.10
75	2570659.790	38519857.970	32.48
76	2570691.862	38519863.120	44.63
1	2570736.474	38519864.370	

S=37517 平方米 合56.2754亩

绘图员:陈燕珍(建昌测绘)
审核员:李慧娜

1:2200

2021年9月数字化测图。面积:37517平方米。
2000国家大地坐标系,1985国家高程基准。
此图单独使用时,不作为权属依据。
2017年版图式。



由扫描宝用户创建

扫码下载
扫描宝

